



ROUTE 168 BRIDGE OVER ROUTE 295 AND INTERCHANGE IMPROVEMENTS

Public Information Center

**Boroughs of Bellmawr, Haddon Heights, Mt. Ephraim
Camden County, New Jersey**

July 17, 2025 to July 31, 2025



AGENDA

01

Project Overview

04

Anticipated Project Schedule

02

**Existing Conditions
Operational & Safety Issues**

05

Contact

03

**Preliminary Preferred
Alternative**

06

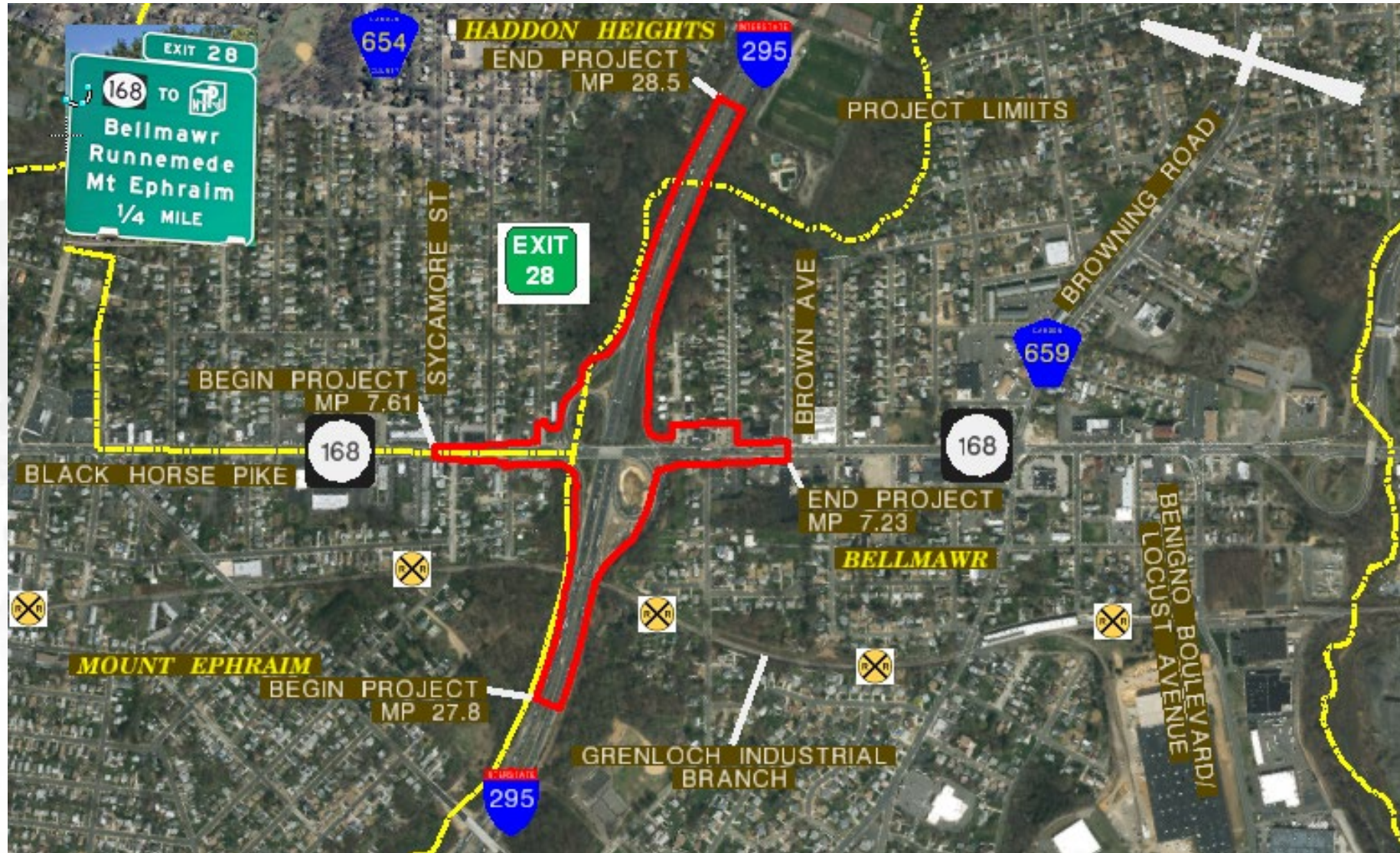
Questions

PROJECT OVERVIEW

Route 168 Bridge over Route 295 and Interchange Improvements

Project Location Map

Route 168 MP 7.23 to MP 7.61 | Route 295 MP 27.8 to MP 28.5





The purpose of the project is to improve the safety and traffic operation in the Route 168 and I-295 interchange area.



The project is needed to address the high crash rate that exceeds statewide average and severe traffic congestion in the interchange area.



The goal is to improve the substandard interchange geometry and interchange operation to improve safety and traffic congestion.

EXISTING CONDITIONS OPERATIONAL & SAFETY ISSUES

Route 168 Bridge over Route 295 and Interchange Improvements

Existing Condition (Environmental Constraints)

Freshwater Wetlands and Riparian Zone:

- Little Timber Creek, Freshwater Wetlands

Federally Threatened and Endangered Species:

- Tricolored Bat-Proposed Endangered

State Threatened and Endangered Species:

- Not Listed

Cultural Resources:

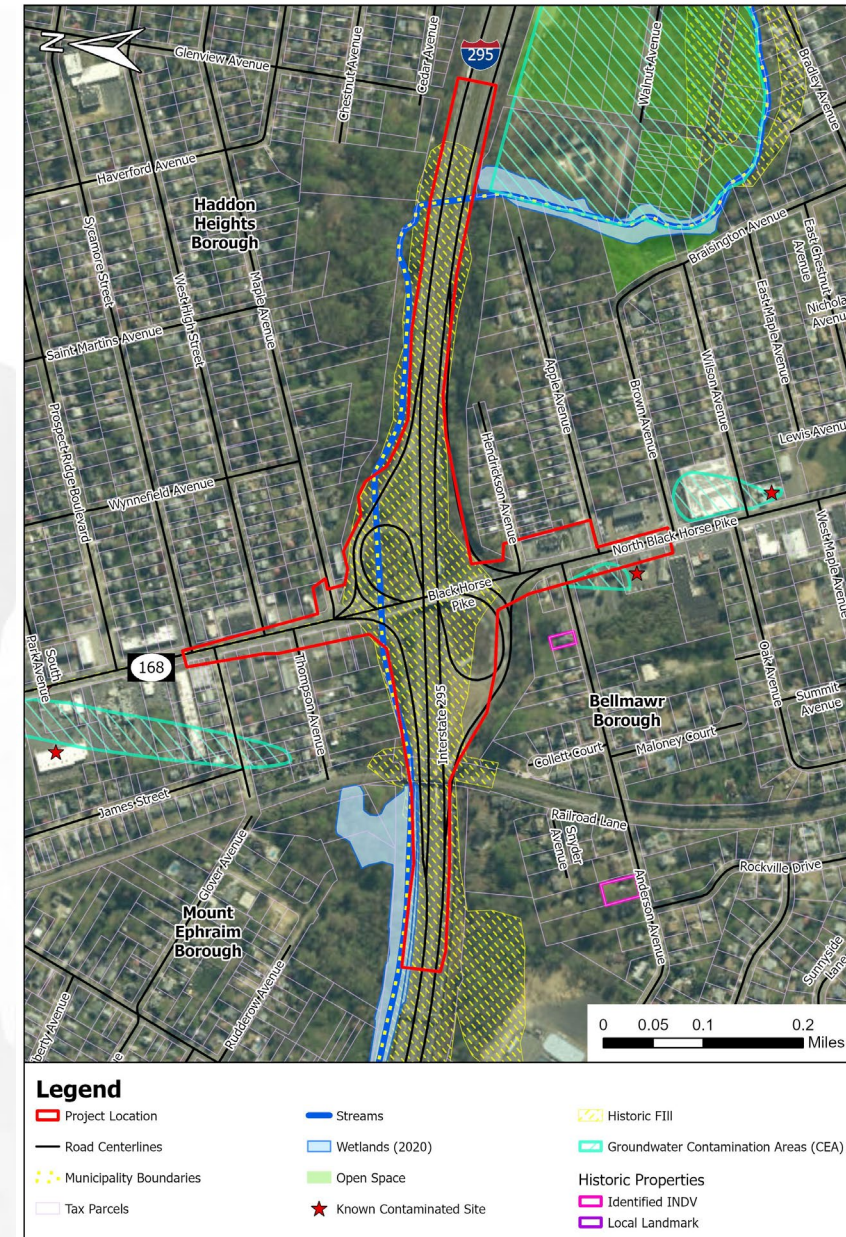
- Isaac Glover House-Historic Landmark;
- Mary T. Mount House-Local Landmark

Open Space/Green Acres Encumbered Park:

- Devon Avenue Park

Potential Contamination Area:

- Historic Fill; Localized Groundwater Contamination



Route 168 Bridge over Route 295 and Interchange Improvements

Existing Condition

I-295/NJ 168 Interchange

- I-295 EXIT 28, ¾ miles North of I-76/NJ-42 Interchange
- Partial Cloverleaf, 2 traffic signals
- Bridge approximately 65 years old (deck replaced in 2013)
- Substandard loop ramps & acceleration lanes
- Substandard vertical clearance under bridge.
- Substandard right shoulders under bridge
- NB Ramp Queue spillback to I-295 NB gore
- Short storage between two signals
- Higher crash rates than Statewide averages
- Unsignalized local road intersections too close to the interchange
 - Hendrickson Avenue (South of interchange, Burger King)
 - Maple Avenue (north of interchange, Dunkin Donuts)

Existing substandard features are contributing factors to crashes and congestion.



Existing Traffic Congestion



Existing Traffic Congestion

Long queue
on NB Exit
Ramp

Risk for rear-
end crashes

High traffic
volumes on
I-295



I-295 MP 27.80 – 28.50

- **2.1 times** the statewide average
- 3.98 crashes/mvm (1.89 average)
- **Safety Score = 8 (Ranges from 1-10, with 10 being the worst)**

Same Direction Rear-End Overrepresented on I-295
MP 27.80 – 28.50

Same Direction Sideswipe Overrepresented on I-295
MP 27.80 – 28.50

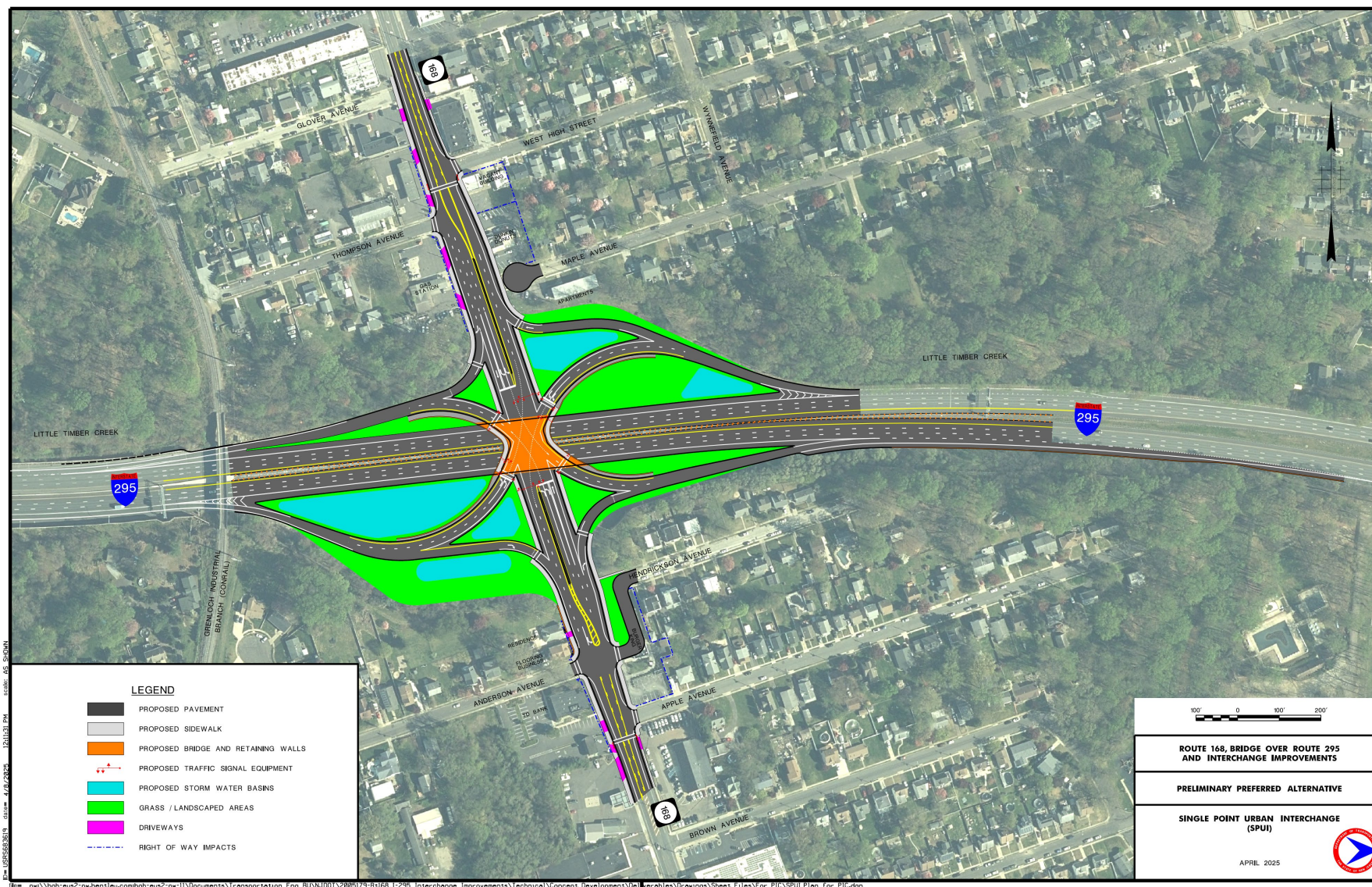
- **Indicator of Lane Change and Merging Friction as a Contributing Factor**

NJ 168 MP 6.79 – 7.50

- **2.4 times** the statewide average
- 9.14 crashes/mvm (3.84 average), Total 163 crashes
- **Safety Score = 10 (Ranges from 1-10, with 10 being the worst)**
- 9 (6%) Moderate and 29 (18%) Minor Injuries
- **NJ 168, MP 6.51 – 8.51 is ranked # 11 on the Safety Management System corridor list**
- **Existing Level of Service F**

**PRELIMINARY
PREFERRED
ALTERNATIVE**

Preliminary Preferred Alternative (PPA)



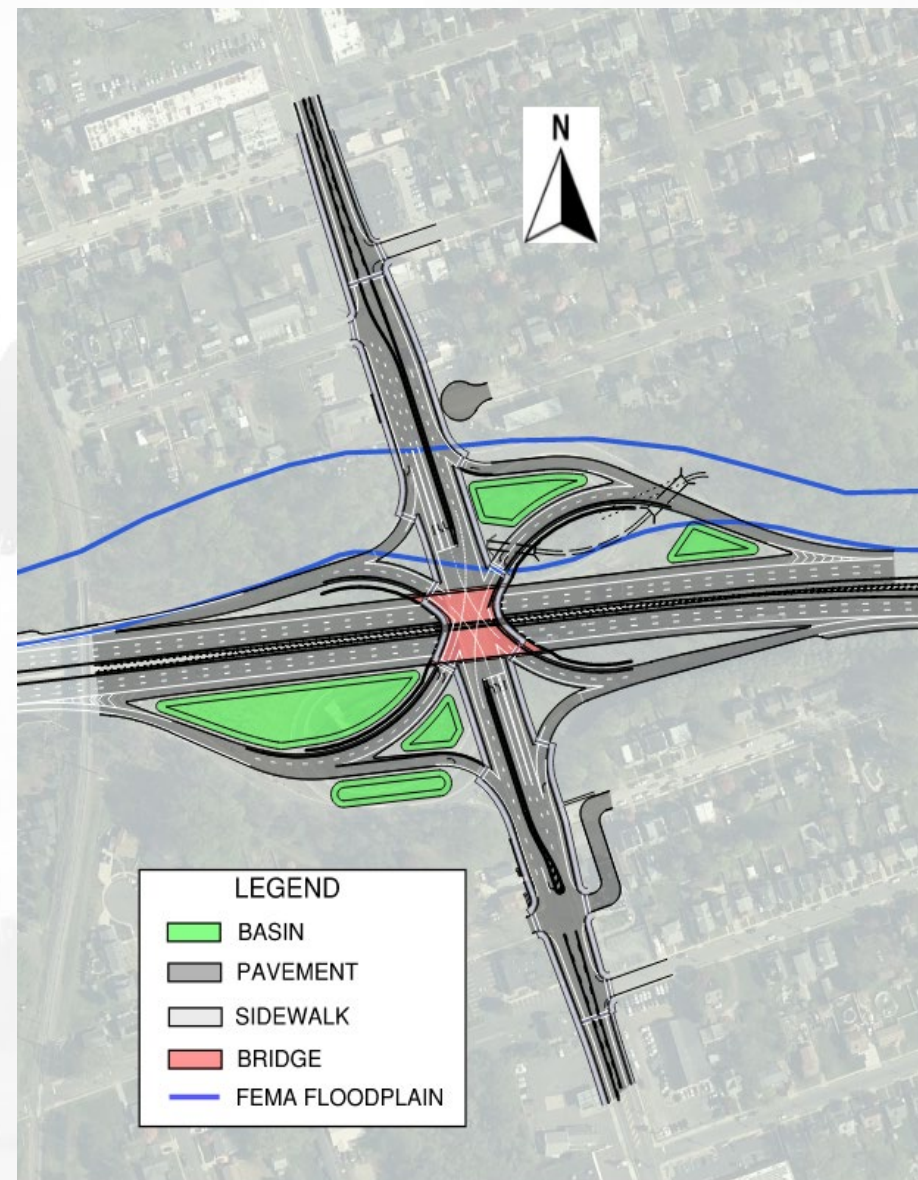
Preliminary Preferred Alternative Permitting & Drainage

Anticipated Permits:

- NJDEP Flood Hazard Area (FHA) Permit
- NJDEP Freshwater Wetlands (FWW) General Permit
- Section 401 Water Quality Certification

Drainage Improvements:

- Construction of new & Modification to existing stormwater management (SWM) practices
- Reconstruction of roadway drainage systems
- Modification to existing box culverts



ANTICIPATED PROJECT SCHEDULE

Anticipated Project Schedule

Anticipated Project Schedule

Concept Development Completion **2025**

Preliminary Engineering Start **2027**

Final Design Start **2029**

ROW Acquisition **2029**

Construction Start **2032**

The schedule is based upon available funding.



THANK YOU

**Questions, comments,
information, or feedback:**

Contact:

Kimberley Nance, Regional Coordinator

Kimberley.Nance@dot.nj.gov

Or submit here:

www.route168-I-295PIC.com

